

OTB user's manual

OTB用户手册

Suitable model:875,875D,892U2IS,888U2IS,891U2.

OTB user's manual / OTB用户手册

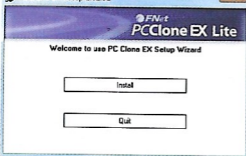
Please use this software to do computer operation if the device does not
如果设备不运行,请使用此软件进行计算机操作

- OTB is applied to USB port only, and it is not available for other ports.
- OTB仅适用于USB端口,不适用于其他端口。
- The type of file system is able to support FAT32 and NTFS both.
- 文件系统类型能够同时支持FAT32和NTFS。
- When users operate the PCClone EX Lite, the login must be from Administrator; it can not login from the Guest or any authorized account.
- 当用户操作PCClone EX Lite时,登录名必须是Administrator的登录名,它无法从访客或任何授权帐户登录。
- Does the hard disk happen to the bad sector? Please confirm in advance that can prevent an improper operating of backup or restore.
- 硬盘是否发生坏道? 请事先确认可以防止备份或还原操作不当。
- The File Backup doesn't support the external HD button operating if the operating system is Windows 98/ Me, please use the hot key instead of.
- 如果运行系统是windows98 / Me,请用热键代替,文件备份不支持外接硬件按钮运行。

Software installation / 软件安装

Step / 步骤

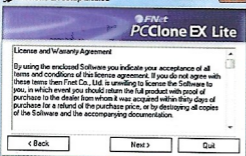
PC Clone EX Setup 2.01.31



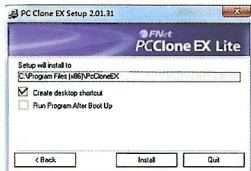
1. Please download this product link driver[OTB]
(please operate the window box of "setup.exe")
请下载此产品链接驱动程序[OTB]
(请操作"setup.exe"窗口)

2. Click "install" / 单击"安装"。

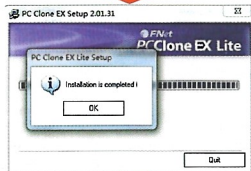
PC Clone EX Setup 2.01.31



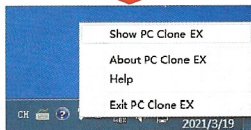
3. Please read the license agreement in detail.
请阅读许可协议细节。
4. If users accept the agreement, please click "Agree" to install.
如果用户接受此协议,请点击"同意"安装。



5. Please setup the installing pathway, and then click "Install" to next.
请设置安装路径,然后按“安装”至“下一步”。



6. The installation is completed, please click "OK" to exit.
安装完成,请单击“OK”退出。



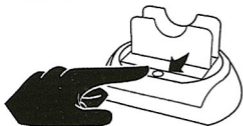
7. "PCClone Ex" icon will displays in the notification area after setup; users can double-click the icon or press the right key of the mouse to execute PCClone EX.
“PCClone Ex”图标将显示在设置后通知区;用户可以双击图标或按右键鼠标键执行PCClone EX。

One Button File Backup (Windows 98 | Me do not support) 一键文件备份(Windows 98 | Me不支持)

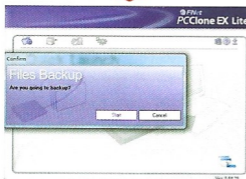
One Button backup function only supports the external HDD case with button design—it won't set comprehensive steps for backup anymore, only use the button on the external HDD case.
一键备份功能仅支持带有按钮设计的外部硬盘盒—它具有不再为备份设置全面的步骤,仅使用外部设备上的按钮硬盘盒。

Note: when you click the button for backup, the icon of PCCloneEX must be staying at the notification area. (For first time using, please refer to the context of "File backup" and "Setup".)
注意:单击备份按钮时,PCCloneEX的图标必须保持在通知区域。(首次使用时,请参阅“文件备份”的上下文和“设置”。)

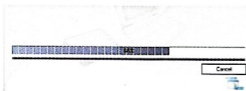
Steps步骤



1. Please plug USB HDD. (Turn on power)
请插入USB硬盘。(打开)
2. Execute PCCloneEX.
执行PCCloneEX。
3. Just press the button on the external case.
"BACK UP"
只要按一下外包装上的按钮就行了。“备份”



4. A dialog window will jump out for confirming the File backup or, users can click "start" by the mouse.
将弹出一个对话框窗口进行确认或备份文件时,用户可按“开始”点击鼠标。

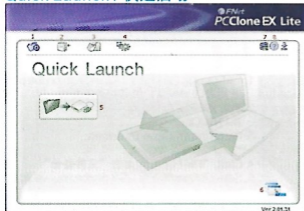


5. When the backup is in progress, PCCloneEX diagram will be blinking at the notification area. There is a dialog box will be displayed the progress every single 10 percentages.
当备份正在进行时,PCCloneEX图将在闪烁通知区域.有一个对话框是否会显示每一个进度10个百分比。



6. After the backup is completed,PCCloneEX diagram at notification area will appears the "backup finished".
备份完成后, PCCloneEX图在通知区将显示“备份完成”。

Quick Launch / 快速启动



1. Quick Launch. 快速启动
2. File Backup. 文件备份
3. File Manager. 文件管理器
4. Setup. 设置
5. File Backup. 文件备份
6. Minimized. 最小化
7. About. 关于
8. Help. 帮助

Quick File Backup 快速文件备份

Users can directly execute "File Backup" from Quick Launch, or use their own "hot key", only one step, and the system data will be backed up easily. (For the first time using, please refer to the subject of "File Backup", or setup your own hot key in "Setup".)

用户可以直接从快速启动中执行“文件备份”，也可以使用自己的“热键”，仅一步，系统数据将轻松备份。（第一次使用，请参阅“文件备份”主题，或在“设置”中设置您自己的热键。）

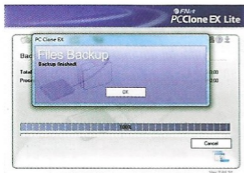
Step 步骤



1. Please plug the external USB HDD into PC, and turn on the power.
请插入外部USB硬盘进入PC,然后打开电源。
2. Execute PCClone EX.Ex
执行PCClone EX.Ex
3. Go on PCClone EX/Quick Launch screen.
继续PCClone EX/快速启动屏幕。
4. Click "File Backup". (Users can also use the hot key they previously set to backup.)
点击“文件备份”。（用户也可以使用他们的热键以前设置为备份。）

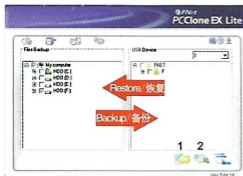


5. Appearing a dialog screen, please click "OK" to backup.
显示一个对话屏幕点击“确定”进行备份。



6. When backup is in progress, the window shows progress and proceed time)
当备份正在进行时，显示进度和使用时间)
7. When backup is done, click "OK" for backup finish! (The file backup has been successfully through PCCloneEX into USB HDD.)
备份完成后，单击“确定”备份完成！(文件备份已成功通过将PCCloneEX转换为USB HDD.)

File Backup / 文件备份



1. File Backup. 文件备份
2. File Restore. 文件恢复

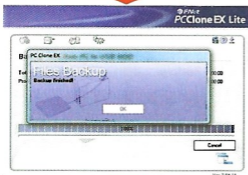
Step 步骤



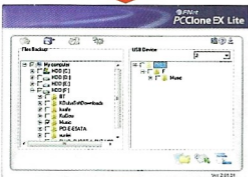
1. Please plug the USB HDD into the computer, and turn on the power.
请把USB硬盘插入电脑，并打开电源。
2. Execute PCClone EX. 执行PCClone EX.
3. Click "File backup". 点击“文件备份”。
4. Select folders / drives from the fix device.
从修复中选择文件夹/驱动器设备。
5. Set one of USB devices for backup. (Please refer to "Setup", and then set some options for the first time using)
设置一个USB设备进行备份。(请参阅“设置”，然后进行设置。首次使用的一些选项)



6. Select "Backup" and press "OK" to start.
选择“备份”，然后按单击“确定”开始。



7. Backup is completed, please press "OK".
备份完成，请按“确定”。



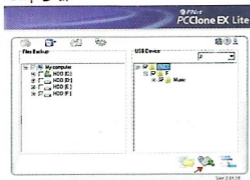
8. The selected folders have been moved from the fixed device to the USB device successfully.
所选文件夹已被移动从固定设备到USB设备成功。



9. There is a hidden root directory F: Fnet in the USB device, all the file backups are kept in there. Be careful, don't delete it carelessly.
有一个隐藏的根本目录F:FNet在USB设备中，所有文件备份留在那儿。小心，不要删除

File Restore 文件还原

Step 步骤



1. Please plug the USB HDD, and turn on the power.
请插入USB硬盘, 然后打开电源
2. Execute PCClone EX.
执行PCClone EX。
3. Go on the PCClone Ex screen.
进入PCClone Ex屏幕。
4. Click "File Backup"/点击“文件备份”
5. Select folders/files of USB device you would like to restore.
选择您的USB设备的文件夹/想要恢复的文件。

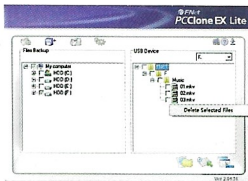


6. Click "Restore", then press "OK" to start
点击“恢复”, 然后按“确定”开始

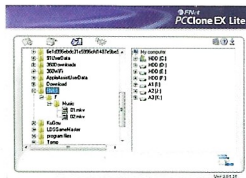


7. When "Restore" is finished, please press "OK".
当“还原”完成时, 请按“OK”。

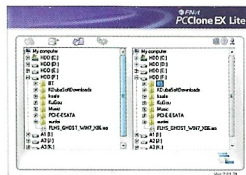
Erase File Backup 删除文件备份



1. Please plug USB HDD, and turn on the power.
请插入USB硬盘,并打开电源。
2. Execute PCClone EX./执行PCClone EX。
3. Go on PCClone Ex screen.
进入PCClone Ex屏幕。
4. Select the "File backup" of USB Device, then, right click the mouse to click "Delete select Files", all select files in the USB device will be deleted.
选择USB的“文件备份”设备,然后右键单击鼠标单击“删除选择文件”,全部选择USB设备中的文件将被删除。

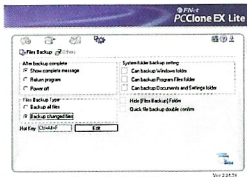


5. Otherwise, delete the root directory
F: FNet directly; it will also work.
否则,删除根目录
F:直接是FNet;它也将起作用。



File Manager文件管理器
PCClone EX Manager function is the same as Windows Explorer. PC users can directly drag the files forward and backward between the fixed device & USB device. It is convenient for users who manage or check their files without clicking the icon of "Windows Explorer" or "My Computer". PCClone前管理器功能和Windows资源管理器一样。个人电脑用户可以直接拖动文件向前和向后在固定装置和USB设备。方便用户使用来管理或检查他们的文件点击“Windows资源管理器”图标或“我的电脑”。

Setup设置



File Backup文件备份

Hot Key setup

When users click "Edit", which can be made up of their own hot key by choosing "Ctrl", "shift", "Alt" and Added a number, or a letter, or function key, or whatever they want to consist of a hot key. Thus, every user has their own edited key to do file backup.

热键设置当用户单击“编辑”时，可以通过选择“Ctrl”，“shift”，“Alt”，并添加数字、字母、功能键或任何其他内容想要包含一个热键。因此，每个用户都有自己的编辑密钥来进行文件备份。

File backup mode/文件备份模式

There are two modes for file backups; one is 'Add-', this function only backs up additional files to the external USB HDD; the other one is 'Discard-', this function reduplicates all data from your PC to the external USB HDD.

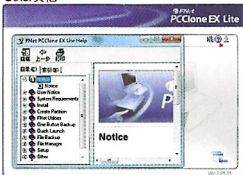
文件备份有两种模式；一个是“添加-”，这个函数只备份。附加文件到外接USB硬盘；另一个是。丢弃。这个函数复制所有数据从您的PC到外部USB硬盘。

Confirmation/确认

When users back up using their hot key; a default dialog box will pop up to asking for confirmation. If users want to backup directly, please cancel the default.

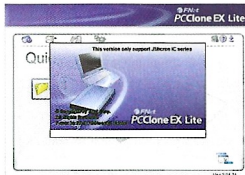
当用户备份使用他们的热键；一个默认的对话框将弹出请求确认。如果用户想直接备份，请取消默认值

Other其他



Concerning PCClone Ex spec, please click the icon of "PCClone EX" on the right side of upper corner of the screen or right click the icon of "PCClone EX" in the notification area.

关于PCClone Ex规格，请点击网页上的PCClone EX图标屏幕右上角的右边或通知区域右键单击"PCClone EX"的图标



Please click the icon of "PCClone EX" on the right side of upper corner of screen, "About PCClone EX" dialog will display and assist to recognize. PCClone EX. 请点击 "PCClone EX" 的图标屏幕右上角的右侧，将显示 "关于PCClone EX" 对话框并协助辨认。PCClone EX。